

NF5934BDA TOP VIEW

ADA ACCESSIBILITY GUIDELINE - ADAAG CONFORMANCE

ELEVATED	ACCESSIBLE	RAMP ACCESSIBLE	GROUND	TYPES
11	11/6	0	5/4	3/3

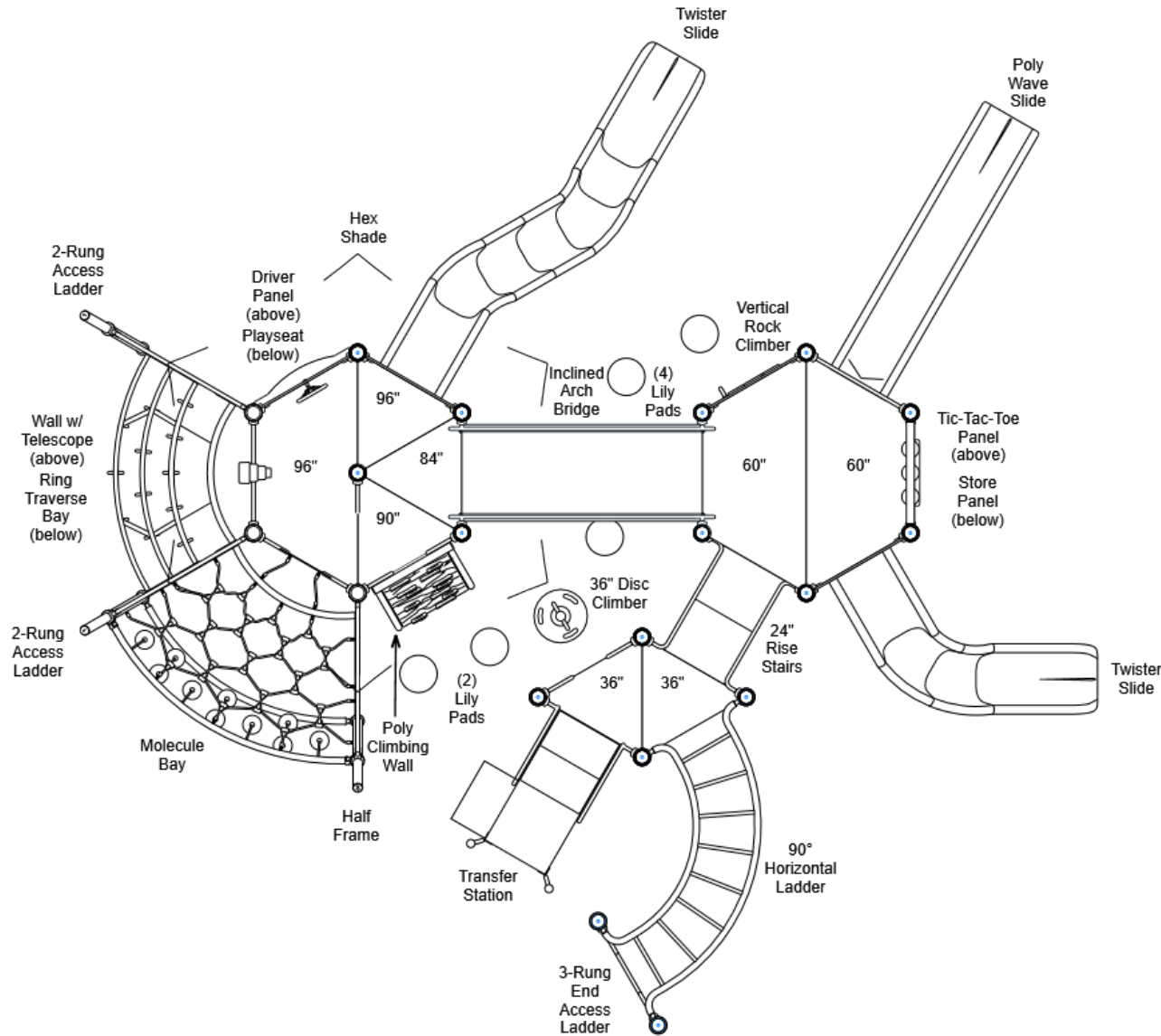
R5

FOR KIDS
AGES
5-12

GENERAL NOTES:

This conceptual plan is based on information provided prior to construction. Detailed site information, including the following, should be obtained, evaluated, and utilized in the final project design. Exact site dimensions, topography, existing utilities, soil conditions and drainage solutions.

WARNING: Accessible safety surfacing material is required beneath and around this equipment that has a critical height value (Fall Height) appropriate for the highest accessible part of this equipment. Refer to the CPSC'S Handbook For Public Playground Safety, Section 4: Surfacing.



STRUCTURE#: NF5934BDA

PROJECT#: NF5934BDA

DATE: 1/2/2020 | DRAWN BY: Derick

MIN. USE ZONE: 44' x 45'

PLAYCRAFT REP:

Playcraft Direct, Inc.



NF5934BDA SITE PLAN

ADA ACCESSIBILITY GUIDELINE - ADAAG CONFORMANCE

ELEVATED	ACCESSIBLE	RAMP ACCESSIBLE	GROUND	TYPES
11	11/6	0	5/4	3/3

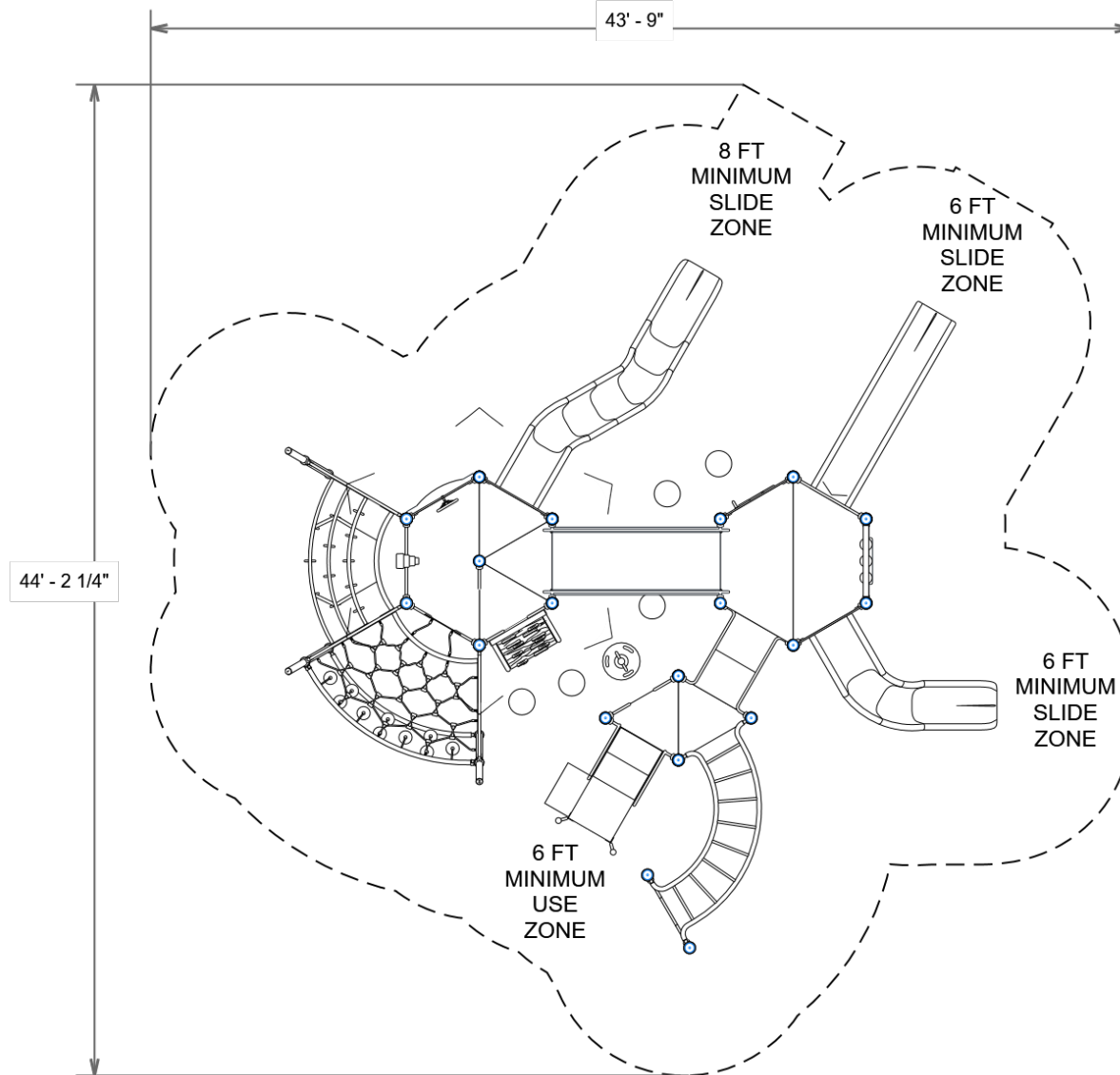


GENERAL NOTES:

This Preliminary Site Plan is based on measurements that were provided in the initial planning phase. All dimensions must be verified prior to the submission of a purchase order. Playcraft Systems will not be held responsible for any discrepancies between actual dimensions and dimensions submitted in the planning phase.

The Minimum Use Zone for a play structure is based on the product design at the time of proposal. Components and structure designs may be subject to change which may affect dimensions. Therefore, before preparing the site, we strongly recommend obtaining final drawings from the factory (available after the order is placed and included in the Assembly Manual).

WARNING: Accessible safety surfacing material is required beneath and around this equipment that has a critical height value (Fall Height) appropriate for the highest accessible part of this equipment. Refer to the CPSC'S Handbook For Public Playground Safety, Section 4: Surfacing.



PROJECT#: NF5934BDA

DATE: 1/2/2020 | DRAWN BY: Derick

MIN. USE ZONE: 44' x 45'

PLAYCRAFT REP:

Playcraft Direct, Inc.



NF5934BDA
SW VIEW

R5

FOR KIDS
AGES
5-12



STRUCTURE#: NF5934BDA
PROJECT#: NF5934BDA
DATE: 1/2/2020 | DRAWN BY: Derick



NF5934BDA
NE VIEW

R5

FOR KIDS
AGES
5-12



STRUCTURE#: NF5934BDA
PROJECT#: NF5934BDA
DATE: 1/2/2020 | DRAWN BY: Derick





Bill of Materials

NF5934BDA

Project# NF5934BDA

1/2/2020

Item	Description	Quantity
NF5934BDA		
HS-1004-R	Collars	72
GF-7002	Dome Cap, R5	13
S-1010-R5-10ft	Post, 10ft R5	1
S-1011-R5-11ft	Post, 11ft R5	5
S-1012-R5-12ft	Post, 12ft R5	6
S-1015-R5-15ft	Post, 15ft R5	1
S-1019-R5-19ft	Post, 19ft R5	6
S-1102-R5	Tri-Deck	5
S-1103-R5	Hex Deck, Half (5 Post)	1
S-1106-R5	Hex Deck, Half (4 Post)	2
S-1110-R	Filler, 12in	1
S-1206-24R45	ADA Stairs, 24in Rise w/ Walls	1
S-1209-24-R5	Transfer Station, 36in-L	1
S-1233-3-HW	Climber, Disc 30-36in (w/ HW)	1
S-1237-5R5	Climber, Vertical Rock 54-60in	1
S-1248-8	Climber, Poly Climbing Wall 90-96in	1
S-1301-1830-S-R5	Wall w/ Telescope	1
S-1304-R5	Single Slide SitDown Wall	1
S-1309-2-R5	Half Walls (Pair) R5	3
S-1309-R5	Half Walls (Single, Right)	1
S-1316-R5	Twister Entry Panel	2
S-1403-R5	End Access Ladder (3-Rung)	1
S-1414-6	Lily Pad Step 06in	6
S-1429-R5	Traverse, Horizontal Ladder (90 deg)	1
S-1514-90R5	Bridge, Inclined Arch (90in)	1



Bill of Materials (continued)

Item	Description	Quantity
S-1615-R5	Store Panel	1
S-1616-R5	Tic-Tac-Toe Panel	1
S-1625-R5	Driver Panel	1
S-1704-5	Slide, Wave 60in (Single)	1
S-1710-5-LL	Slide, Twister 60in (L2)	1
S-1710-8-RSSLS	Slide, Twister 96in (R-S-S-L-S)	1
S-18026-R5	Shade Canopy, Hex	1
S-1962-R5	Playseat	1
S-5101-H	Half Frame	1
S-5102	2-Rung Access Ladder	2
S-5204-DL	Molecule Bay (Deck)	1
S-5205	Ring Traverse Bay	1
HS-1100-2	Deck to Deck Hardware	4