

# NF536B5FA

## TOP VIEW

ADA ACCESSIBILITY GUIDELINE - ADAAG CONFORMANCE

ELEVATED	ACCESSIBLE	RAMP ACCESSIBLE	GROUND	TYPES
0	0/0	0	5/0	1/0

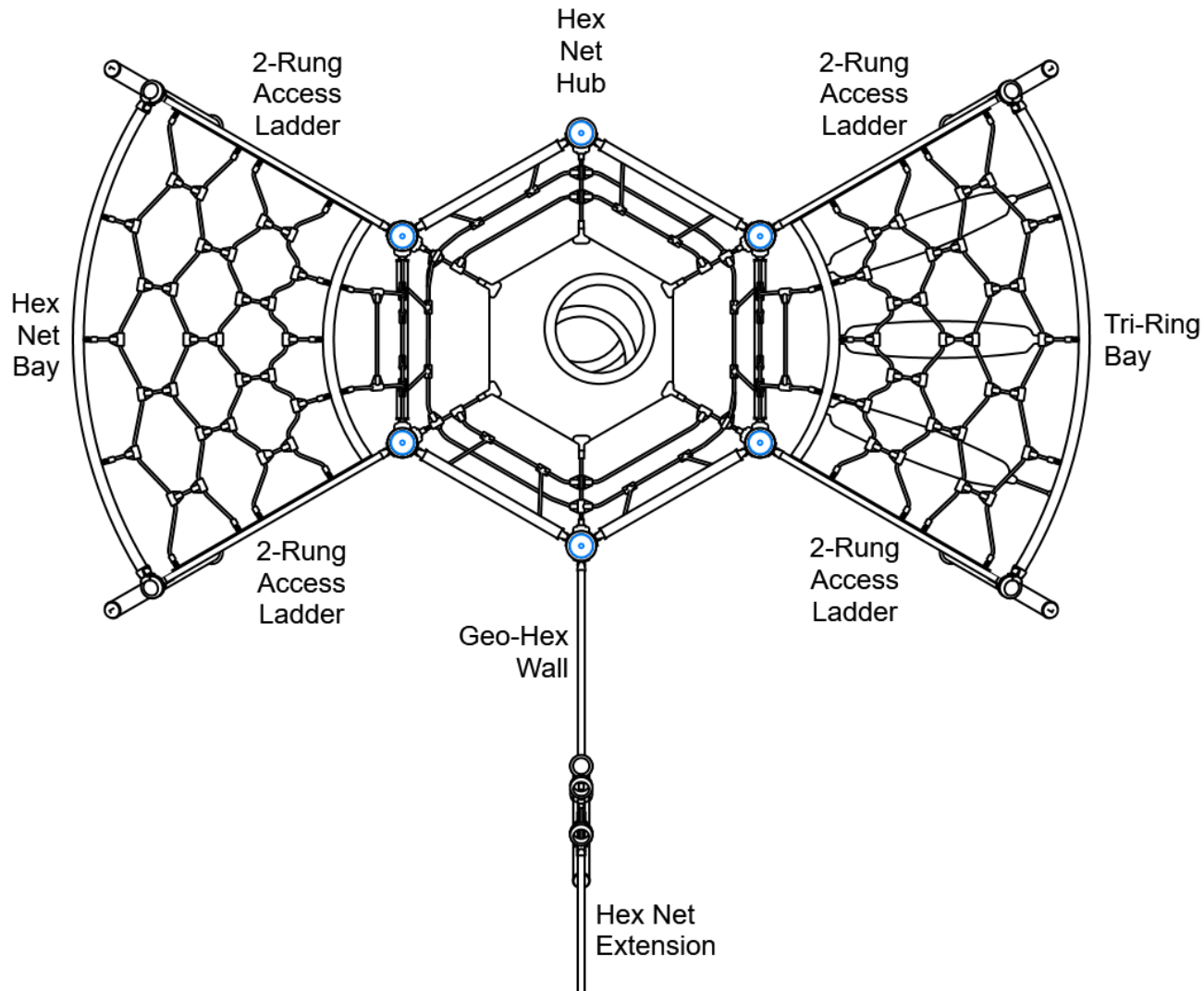
R5

FOR KIDS  
AGES  
5-12

### GENERAL NOTES:

This conceptual plan is based on information provided prior to construction. Detailed site information, including the following, should be obtained, evaluated, and utilized in the final project design. Exact site dimensions, topography, existing utilities, soil conditions and drainage solutions.

WARNING: Accessible safety surfacing material is required beneath and around this equipment that has a critical height value (Fall Height) appropriate for the highest accessible part of this equipment. Refer to the CPSC'S Handbook For Public Playground Safety, Section 4: Surfacing.



STRUCTURE#: NF536B5FA  
PROJECT#: NF536B5FA  
DATE: 9/17/2019 | DRAWN BY: JDE

MIN. USE ZONE: 31' x 29'

PLAYCRAFT REP:  
**Playcraft Direct, Inc.**



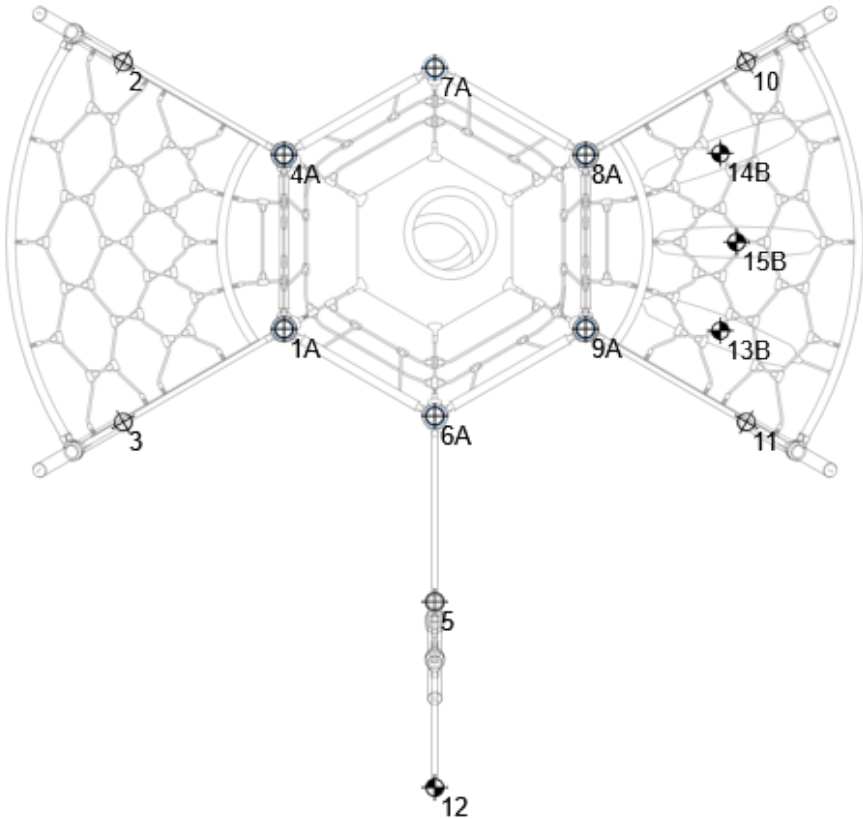
NF536B5FA  
TOP VIEW (Footings)

ADA ACCESSIBILITY GUIDELINE - ADAAG CONFORMANCE

ELEVATED	ACCESSIBLE	RAMP ACCESSIBLE	GROUND	TYPES
0	0/0	0	5/0	1/0

R5

FOR KIDS  
AGES  
5-12



FOOTING TABLE			
#	TYPE	SIZE/DEPTH	QTY
A	PostFooting	W:18" x L:18" x D:30"	11
B	EF12	W:12" x L:12" x D:18"	4

FOOTING ORDINATE TABLE							
#	X	Y	DIAG	#	X	Y	DIAG
1	0'-0"	0'-0"	0'-0"	9	6'-6"	0'-0"	6'-6"
2	-3'-6"	5'-9"	6'-9"	10	10'-0"	5'-9"	11'-6"
3	-3'-6"	-2'-0"	4'-0"	11	10'-0"	-2'-0"	10'-2"
4	0'-0"	3'-9"	3'-9"	12	3'-3"	-9'-10"	10'-5"
5	3'-3"	-5'-10"	6'-9"	13	9'-5"	0'-0"	9'-5"
6	3'-3"	-1'-10"	3'-9"	14	9'-5"	3'-9"	10'-2"
7	3'-3"	5'-8"	6'-6"	15	9'-9"	1'-10"	9'-11"
8	6'-6"	3'-9"	7'-6"				

STRUCTURE#: NF536B5FA  
PROJECT#: NF536B5FA  
DATE: 9/17/2019 | DRAWN BY: JDE

MIN. USE ZONE: 31' x 29'

PLAYCRAFT REP:  
Playcraft Direct, Inc.



# NF536B5FA SITE PLAN

ADA ACCESSIBILITY GUIDELINE - ADAAG CONFORMANCE

ELEVATED	ACCESSIBLE	RAMP ACCESSIBLE	GROUND	TYPES
0	0/0	0	5/0	1/0



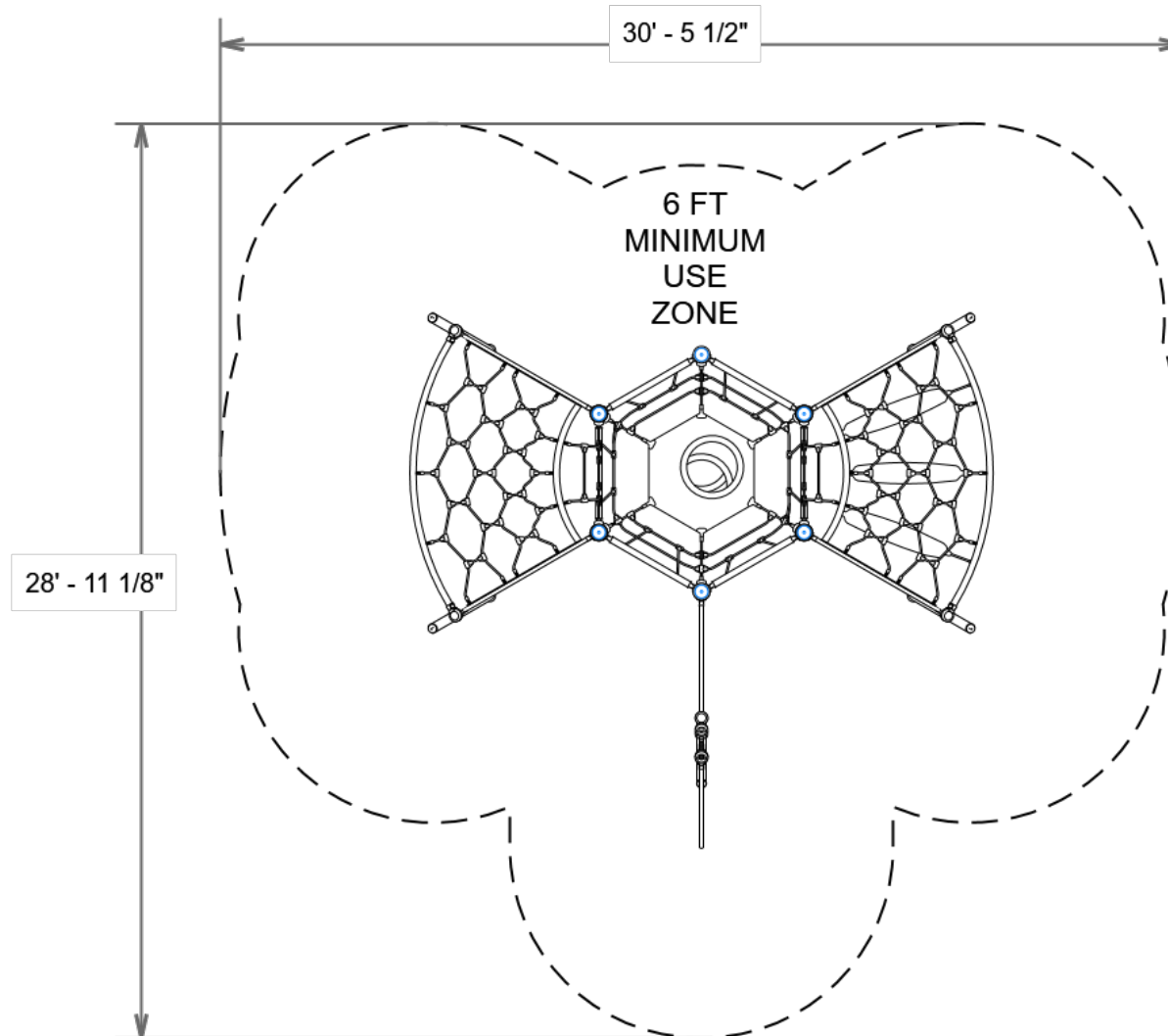
FOR KIDS  
AGES  
5-12

## GENERAL NOTES:

This Preliminary Site Plan is based on measurements that were provided in the initial planning phase. All dimensions must be verified prior to the submission of a purchase order. Playcraft Systems will not be held responsible for any discrepancies between actual dimensions and dimensions submitted in the planning phase.

The Minimum Use Zone for a play structure is based on the product design at the time of proposal. Components and structure designs may be subject to change which may affect dimensions. Therefore, before preparing the site, we strongly recommend obtaining final drawings from the factory (available after the order is placed and included in the Assembly Manual).

**WARNING:** Accessible safety surfacing material is required beneath and around this equipment that has a critical height value (Fall Height) appropriate for the highest accessible part of this equipment. Refer to the CPSC'S Handbook For Public Playground Safety, Section 4: Surfacing.



STRUCTURE#: NF536B5FA

PROJECT#: NF536B5FA

DATE: 9/17/2019 | DRAWN BY: JDE

MIN. USE ZONE: 31' x 29'

PLAYCRAFT REP:

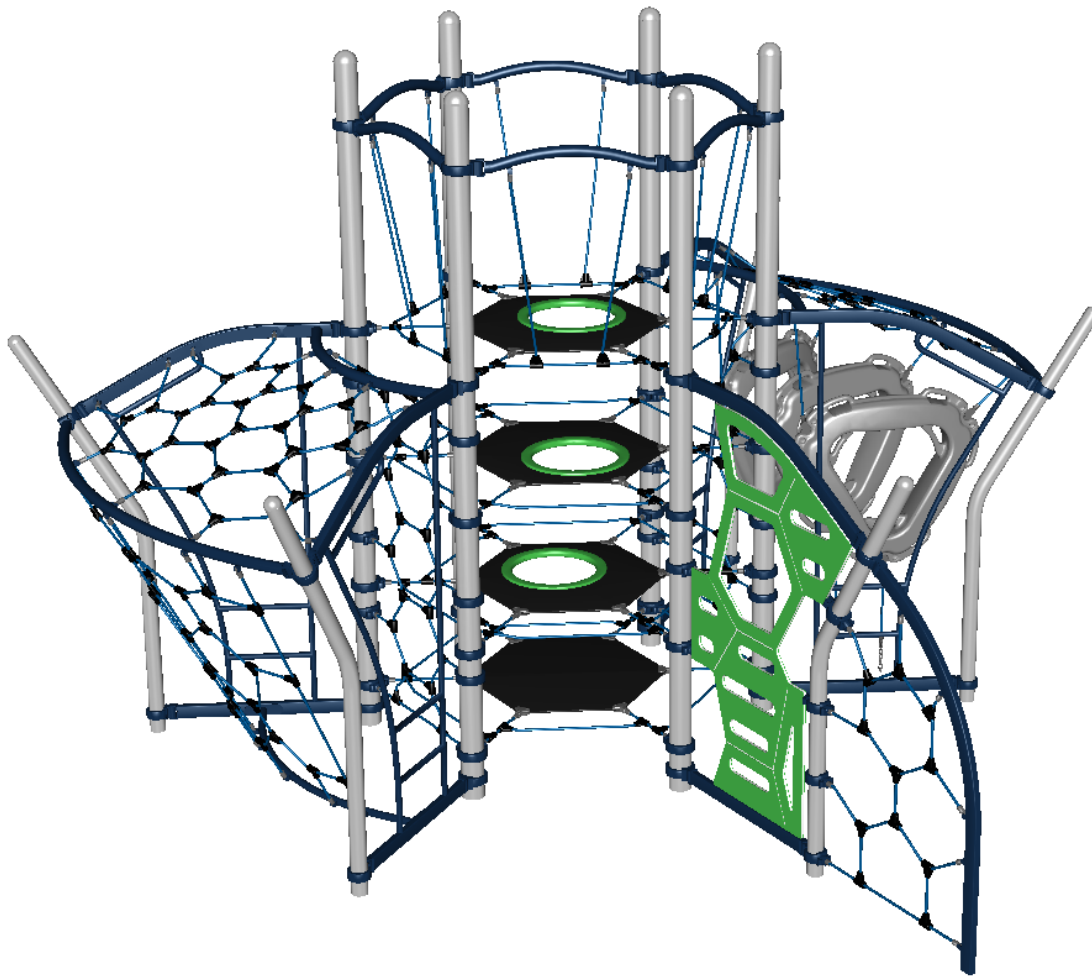
**Playcraft Direct, Inc.**



**NF536B5FA**  
**SW VIEW**

**R5**

FOR KIDS  
AGES  
5-12

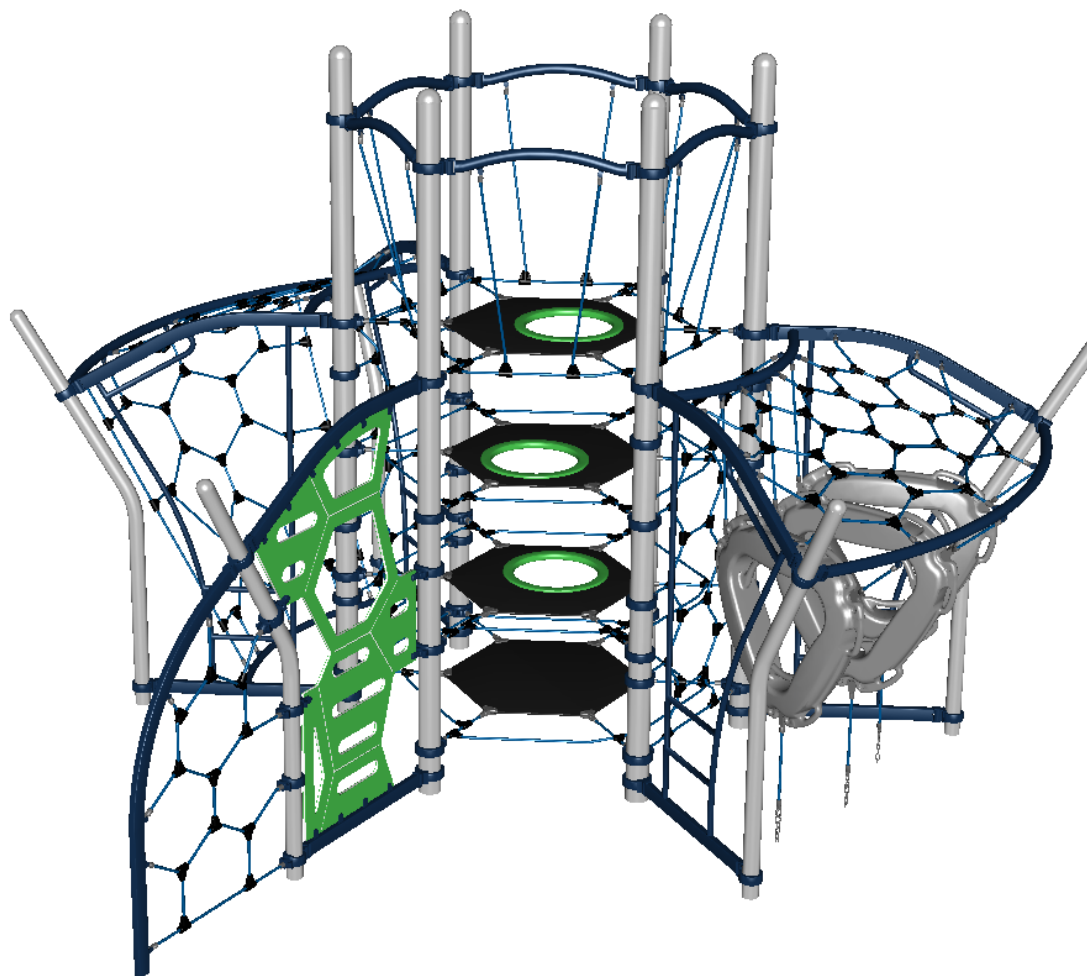


STRUCTURE#: NF536B5FA  
PROJECT#: NF536B5FA  
DATE: 9/17/2019 | DRAWN BY: JDE

**NF536B5FA**  
**SE VIEW**

R5

FOR KIDS  
AGES  
5-12

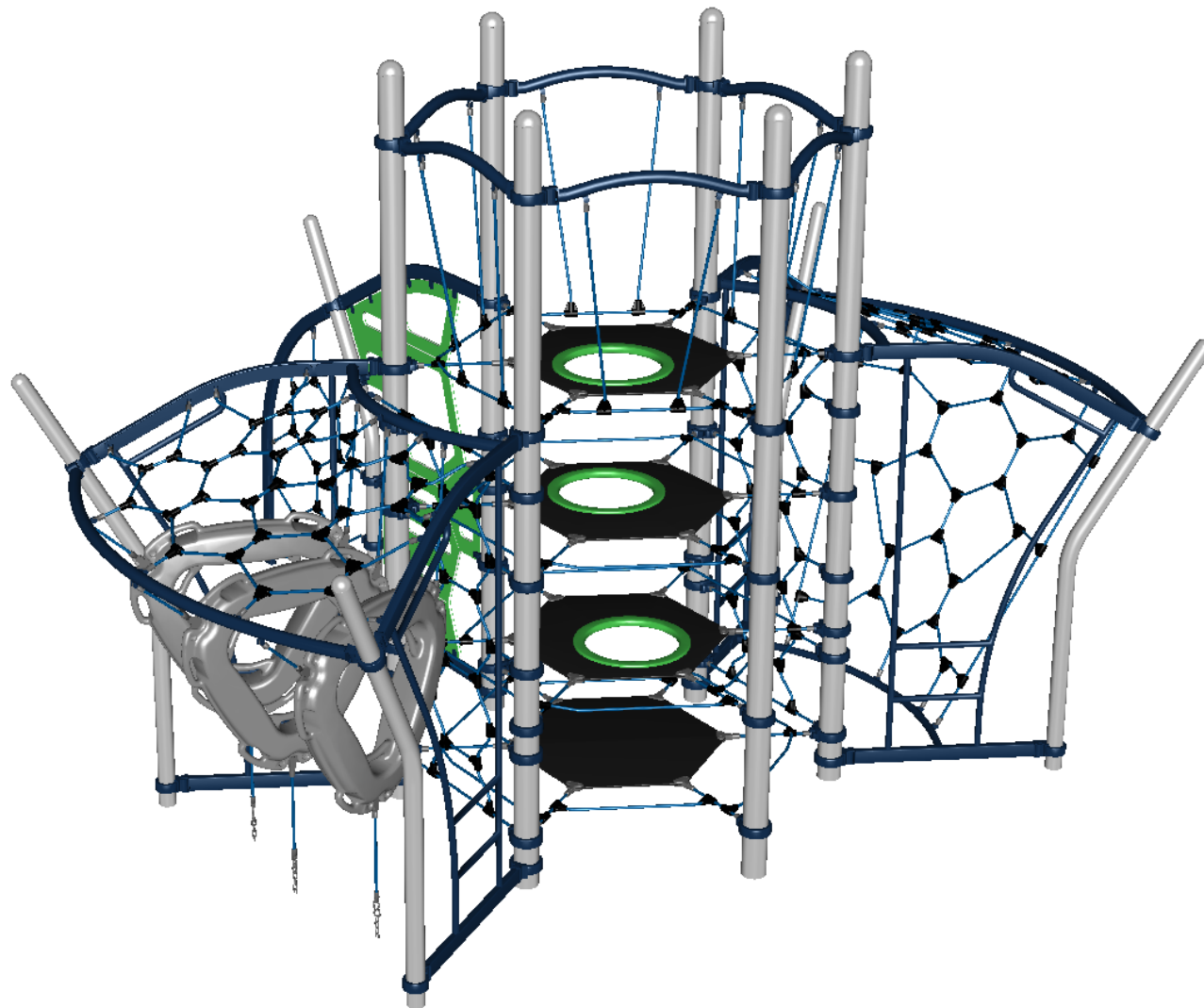


STRUCTURE#: NF536B5FA  
PROJECT#: NF536B5FA  
DATE: 9/17/2019 | DRAWN BY: JDE

**NF536B5FA**  
**NE VIEW**

R5

FOR KIDS  
AGES  
5-12

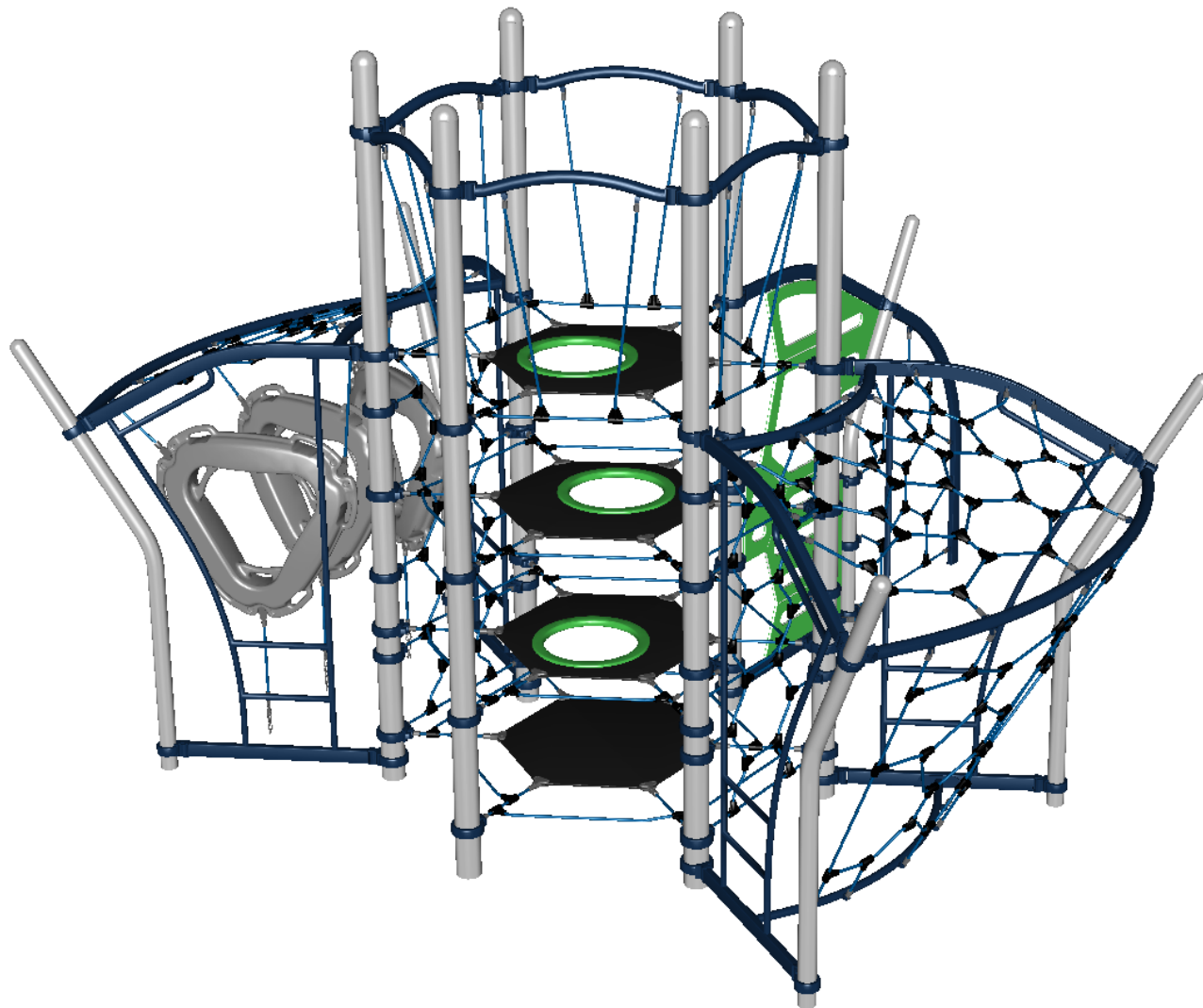


STRUCTURE#: NF536B5FA  
PROJECT#: NF536B5FA  
DATE: 9/17/2019 | DRAWN BY: JDE

**NF536B5FA**  
**NW VIEW**

**R5**

FOR KIDS  
AGES  
5-12



STRUCTURE#: NF536B5FA  
PROJECT#: NF536B5FA  
DATE: 9/17/2019 | DRAWN BY: JDE



## Bill of Materials

NF536B5FA

Project# NF536B5FA

9/17/2019

N/A, N/A N/A

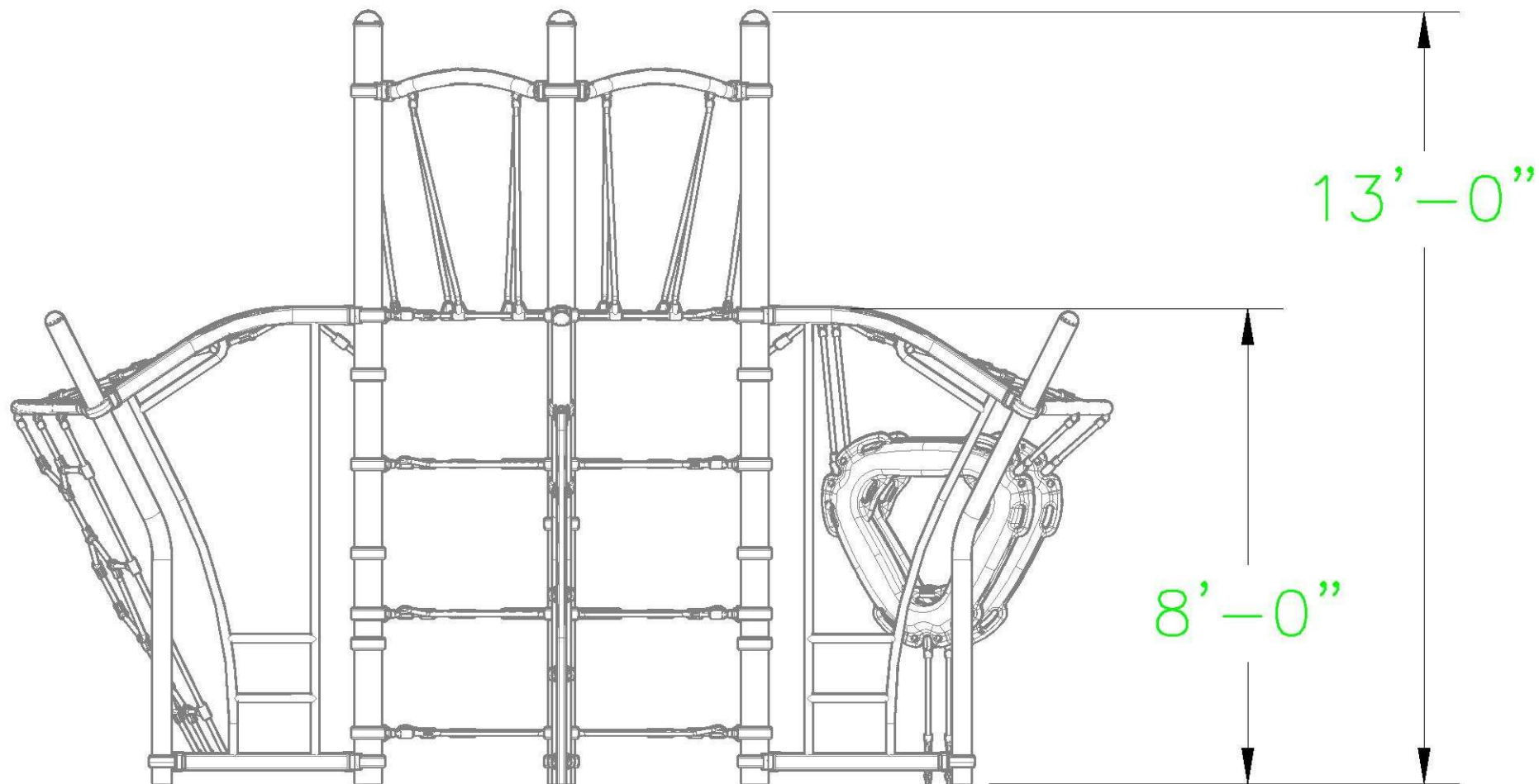
Item	Description	Quantity
NF536B5FA		
HS-1004-R	Collars	61
GF-7002	Dome Cap, R5	6
S-1016-R5-16ft	Post, 16ft R5	6
S-1925-R5	Hub, Hex Net	1
S-5102	2-Rung Access Ladder	4
S-5103	Geo-Hex Wall	1
S-5201	Hex Net Bay	1
S-5203	Tri-Ring Bay	1
S-5301	Hex Net Extension	1
HS-1007-R5	Extra Hardware	2



## CUSTOM MODULAR PLAYSYSTEM

Elevation View

Scale: 3/8" = 1'-0"



SN: NF536B5FA  
Date: 09/20/19  
Drawn By: AMS

**NF536B5FA**  
Playcraft Direct, Inc.



**PLAYCRAFT**  
SYSTEMS

123 NORTH VALLEY DRIVE  
GRANTS PASS, OR 97526  
PH: 541-955-9199  
FAX: 541-955-6130  
[www.playcraftsystems.com](http://www.playcraftsystems.com)